

Annual Newsletter 2024/25

From The Chair of the Executive Committee

Follow us:



@EngleseaBrookChapel



engleseabrook



@engleseabrook.
bsky.social



@engleseabrookchapel
andmuseum

INSIDE THIS ISSUE:

From The Director	2
Money News	5
Heritage News	6
Learning	8
2024 At A Glance	12
Contact Us	12



Englesea Brook Chapel and Museum

Welcome to this year's annual report for Englesea Brook Chapel and Museum of Primitive Methodism. It has been another eventful year as our dedicated team of staff and volunteers have engaged people of all ages, sharing the Primitive Methodist story through craft, theatre, worship, and school partnerships to name but a few. Englesea Brook is a heritage site with a unique place in Methodist history but there is no doubt that it is the people who staff the project in various capacities who make EB such a special place.

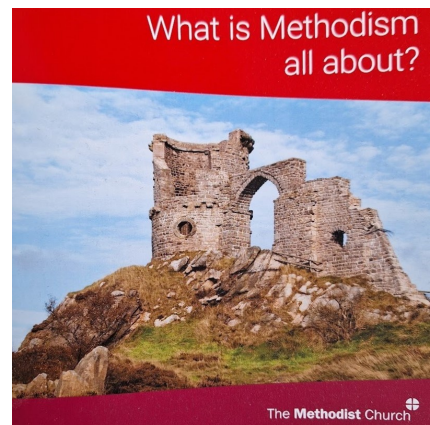
Similarly, the Book Emporium, a treasure trove for readers and a vital financial support for the project, is enabled by willing and faithful volunteers. We could not be the project that we are without people who offer their time freely.

Thank you all!

As ever, we face ongoing challenges of maintaining a historic building, raising funds and awareness in a demanding climate. However, each challenge is met with creativity, vision, resourcefulness and cake.

Englesea Brook is more than a museum, it is a community passionate about transformation, justice and faith. I hope you enjoy reading this report and are inspired to visit our project, hear our stories and, of course share in the cake!

Rev Helen Kirk



Helpful guide produced by the Connexional Heritage team

From The Director

2024 has been a year of consolidation at Englesea Brook. The staff team has continued to find new and exciting ways to tell the Primitive Methodist story. Last year we uncovered the untold story of how Primitive Methodism was involved in the creation of the Probation Service; and in the coming year, additional funding from AIM (the Association of Independent Museums) is enabling us to explore more of this story through the creation of educational films. This year has also seen our Learning Officer using the breadth of the Primitive Methodist story to teach the Christian element of the RE curriculum each week to various year groups from Adelaide Special School in Crewe! More about these initiatives later in the Report. 2024 has also seen new volunteers settle in and bring a whole new wealth of experience and commitment. Jobs that have been on our wish list to be done, but kept being pushed down the 'To Do' list, have been or are close to completion. All the

ephemera has been recatalogued. The 52 paintings added to the collection last year, all of which needed cleaning and some TLC have all been restored to their former glory thanks to Gordon. Gordon joined us having retired after 35 years working from Stoke on Trent museums. And the whole collection is being photographed to complete our MODES records. This report also celebrates those volunteers who have served Englesea Brook over many years – their dedication and commitment helps consolidate the reputation we have of warmth and welcome. Yet 2024 has also been an opportunity to try new things. The staff team are open to ideas and giving things a go. Both the summer barbeque and the Family Christmas were new initiatives that were hugely successful and to be repeated in 2025! If you're a book lover, look out for our Book Club in 2025. I hope you enjoy reading

about the work of Englesea Brook – and if you are interested, the door is always open for new volunteers (particularly those with a passion for books or gardening!).

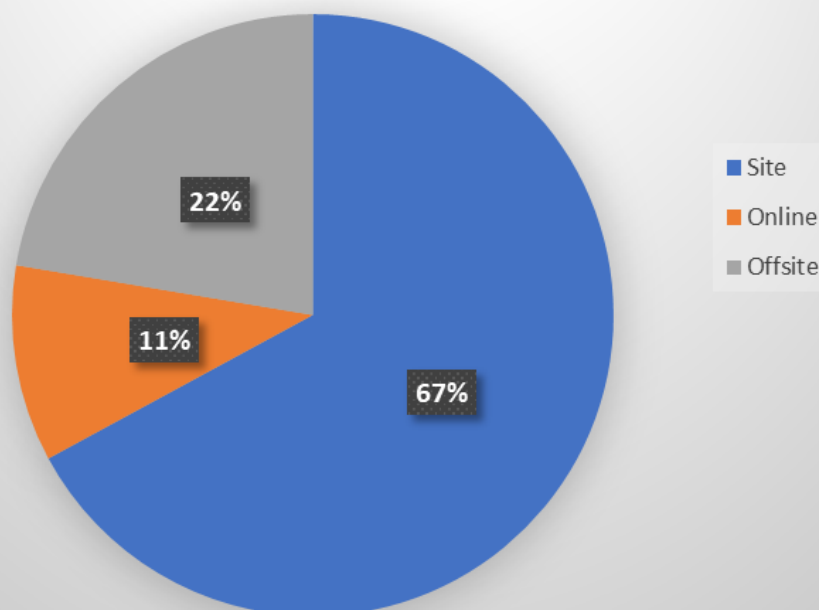
Ruth Hilton
 Director, Englesea Brook Chapel and Museum

“This report... celebrates those volunteers who have served Englesea Brook over many years – their dedication and commitment helps consolidate the reputation we have of warmth and welcome.”



Our hugely successful summer barbecue and quiz

VISITOR BREAKDOWN 2024



Volunteers: What Would We Do Without Them?

Our volunteers continue to be the life-blood of Englesea Brook and the Book Emporium. From playing the keyboard at our heritage services to restoring portraits in the collection, to putting wiring for wifi into the chapel and museum, to keeping our finances in order, to sorting and shelving hundreds of second-hand books, to taking books to sell at specialist book auctions; Baking cakes, hoovering the chapel, weeding graves, toasting teacakes, cataloguing artefacts and library books, keeping MyPrimitiveMethodist website current and updated – all of this and

more is undertaken with dedication and humour by the band of volunteers that regularly support the work of the project. A huge thank you to them all.

Randle Knight, our volunteer curator, has this year celebrated 35 years as a volunteer here at the museum. We were delighted to be joined by the deputy mayor of Crewe, Sally Graham, herself a Methodist local preacher, to recognise and thank him for this wonderful achievement. I hasten to add that Randle continues to travel here every week and long may it continue!



Randle Knight: 35 years a volunteer



Our newly-varnished chapel door

Building Matters

Dealing with old buildings can be a challenge, but its good to report that the worst thing to deal with this year has been a dead mouse and bat droppings! Other than ongoing maintenance (do admire the newly varnished and painted door to the chapel next time you visit) the work undertaken has been to enhance our facilities.

At Englesea Brook, funding was received from Heritage Compass to upgrade the lighting throughout the chapel and museum to be more energy efficient, including the installation of movement sensors and enhance the lighting in the chapel. The former

has been undertaken, the latter awaits approval from the conservation team at Methodist Property in line with the Chapel's Grade II listing.

Thanks to the tenacity of some locals in the village, superfast broadband reached Englesea Brook, so we can now boast faster-than-before broadband, which we hope to extend into the chapel and museum. This has been a huge relief to the staff, for whom glitchy wifi is now almost a thing of the past! The Alsager Book Emporium has also had work done to improve the site for visitors and volunteers alike. New lighting has been installed in the schoolroom side, as well as lighting installed in one of the sheds at the back enabling a new area for visitors to browse. In addition, new shelving has been fitted – a colossal job for the team to shift all the books! – giving yet more shelf space. The team at the Emporium also has plans for improving the access around the back and updating the toilet facilities if funding can be found. Watch this space....



Broadband is finally installed

Fundraising Group - Making It Happen

As highlighted in the Treasurer's report, Englesea Brook made a surplus this year – but only just! The museum faces ever increasing costs, and our budget forecast for this year suggests a deficit – but we are not sitting idly by! The newly formed Fundraising group is looking at ways to generate additional income, but also how to limit our costs.

In the summer a barbeque and quiz was held on the front lawn on a balmy August evening – great fun was had by all and £300 was raised. Over the Christmas period, various fundraising events are planned – two wreath-making sessions, a Family Victorian Christmas afternoon with crafts, carol-singers and interesting facts about Christmas for the Prims and a

retelling of A Christmas Carol (which has been so well appreciated over the last couple of years). We're not afraid to try new things – and repeating the things that work well!

The group are also exploring Tap to Donate options, and ways to promote more specialist books to sell at the Book Emporium. One of the things, however, that was agreed at the outset, was the importance of maintaining Englesea Brook Chapel and Museum as a free-to-visit experience to ensure that this important story is accessible to as many people as possible. It's a fine balance, but one that all at Englesea Brook are committed to uphold.



Spinning at our Victorian Family Christmas Event

Hugh Bourne Visits The Cheshire Show

This was a first, Englesea Brook at the Cheshire Show! Margaret Done, one of our volunteers, also volunteers in the ecumenical Church Tent at the Cheshire Show. Each year, the tent also hosts a Christian project in its welcoming space – and at Margaret's suggestion, this year that was Englesea Brook!

As hospitality is key to the ethos of the Church tent, traditional love feast cake was served and the Hugh Bourne exhibition panels were erected. It was a wonderful opportunity to meet and talk to people, most of whom had never visited or even heard of Englesea Brook, let alone Primitive Methodism. Many lingered to learn more – but it's a challenge to sum up all that we do in a quick conversation. Nonetheless, it's important that the staff and volunteers go beyond the gates of the Chapel and Museum to engage with people who might never engage with museums or Methodism – because nearly all we spoke to were pleasantly surprised by all they learnt!



Englesea Brook at the Cheshire Show

The Stephen Hatcher Library

The library has been the recipient of some generous donations this year. The late Dorothy Graham's family got in touch to offer us books from her extensive library. In addition, Rev Dr Stephen Hatcher has kindly been donating more of his personal library, a rucksack at a time.

We are keen to recruit a volunteer, or team of volunteers, to take on responsibly for the library following the retirement of John Percival in February. In November 2024, Jon

Purcell, a chartered librarian, former Liaison Officer for Methodist Archives and currently the Archivist Convenor for the North West England District, came to review the library and its contents. In his words: *'A small but very impressive collection of printed material related to Primitive Methodism of national significance'*. One of the ways we plan to

promote this unique treasure is to publicise the library to further and higher education institutions with Methodist-linked courses and Methodist training provision. Thanks to a small grant from the Religious Archives Group, the equipment for researchers has been upgraded – and of course, there is always a warm welcome from

knowledgeable staff and volunteers!

Treasurer's Report

This is my first report as Treasurer, having taken over the reigns on 1st February 2024.

I would like to thank the Executive for placing their faith and confidence in me, and for the opportunity of being involved in such a wonderful organisation, made up, as ever, of the best people and characters one could hope to be involved with.

My thanks also go to my predecessor John Percival, whose care and diligence over many years has made taking over such a straightforward task. At the time of writing, the previous financial year has ended, and we are almost a quarter through our next financial year.

Reflecting on the past financial year, it will be noted that in common with many other smaller organisations, financial resources are precious. For one example, the costs of heating and maintaining our older buildings have had an impact. Overall, however, we managed to complete the

year with a small surplus of £31.54.

Our excellent team of staff have built upon previous successes in securing additional grant funding and extending the reach of the organisation for example in school studies, whilst maintaining the full integrity as befits the organisation. It would also need to be recognised that Englesea Brook would not be able to function without our small army of volunteers. Some of these volunteers may be seen, some work behind the scenes, but all make an incredible contribution through their diligence, care, passion and mostly, a well needed sense of humour!

The current financial year will bring its challenges, but I feel fortunate to share these with the volunteers, staff and the Executive. Whilst our main grant income has increased modestly, we know that our costs will increase at a greater rate. We continue to benefit from the significant contribution made by

Money News

Alsager Book Emporium who keep breaking records each year but we cannot rest on these laurels. For the year 2024-25 I am keen to adopt a two-fold approach to managing our finances. Firstly, by managing costs wherever in our power to do so. Secondly, we are looking to increase and diversify our income and have established a fund-raising committee to assist in this

goal, who have already scheduled some excellent events in the diary. We need to make better use of our existing resources and are currently improving our Gift Aid scheme to ensure that it meets current legislation, (please support us in this way if possible).
Anthony Bellis



Our Treasurer, Anthony Bellis

Alsager Book Emporium - The Secondhand Book Treasure Trove

Alsager Book Emporium has been going now for over ten years and we have raised over £150,000 for Englesea Brook Museum. It has been a great success and it is amazing that when we started we had a few tables with books on and the church was full of pews with books on the seats. Over the years the pews have gone, every wall and space filled with bookcases and shelves as well as 3 sheds erected in the back garden. It has always depended on volunteers and we have had

a few dozen who have made the place very special. They have helped not just sell books but also to make people welcome. We have seen some retirements but new ones have joined us.

We depend on voluntary donations of books and they still keep coming, sometimes in large quantities. This is particularly so in June and July when Methodist ministers are moving house! We have developed new



Inside the world-famous Alsager Book Emporium

ways of selling books as well as through weekly sales - via Auctions, EBay, Ziffitt, Facebook and World of Books, which means we have increased the chance of reaching the right people for the more unusual and valuable books. We are grateful to the support of the Cheshire South Methodist circuit for the use of the building. This year, we have renewed the lighting and the shelving which has made a big difference. In 2025 we would like to improve the outside area with some paving and other improvements. We intend to

raise the money ourselves and after Christmas will look at Crowd-funding and also some local grants. We already have some money promised. We have some wonderful customers, typified by this story. A woman came back a week after buying a book and handed me a £5 note. 'I found this in the book' she said, 'someone must have used it as a bookmark'!

Rev. Malcolm Lorimer



Some of the Book Emporium's huge selection

Heritage News

Root & Branch: How 5 Shillings, Faith And Belief Inspired The Beginning Of The Probation Service

The Root & Branch exhibition that we curated in partnership with the Probation Service of England and Wales has come to the end of its tour. After launching at Englesea Brook in August 2023, the exhibition travelled to all the Methodist museums, as well as churches, gurdwaras, mosques, and Willesden Jewish cemetery. On 29 October 2024 we held a celebratory closing event at Sheffield Hallam University. The University provides training courses for Probation Officers. The event was attended by the Englesea Brook staff, teaching staff from the university, and members of the Probation

Service.

We are pleased to say that though the exhibition has finished its travels, the influence of Root & Branch continues. The website that accompanied the exhibition remains online for perusal, and discussions are underway for a permanent collection of Probation Service artefacts to be housed at the National Justice Museum in Nottingham.

Englesea Brook have also been awarded additional funding by the Association of Independent Museums to undertake a project about the Temperance movement entitled Picking up a Lost Thread.



The Exhibition visits Petty France, London, where the Ministry of Justice is based

Keele University Placement



Caroline with the display that she curated

We had a placement student working with us from January to March 2024. Caroline, an history student, showed dedication and was a credit to her university. She learnt the key aspects of museum work, particularly collections care. She learnt how to accession items into the collection, the equipment and methods for marking and labelling, the procedure for checking the pest traps, and helped to provide Hugh Bourne's boot with a bit of TLC.

Her main project was the curation of a display in the museum that focused on three key aspects of a Primitive Methodist

childhood: baptism, toys, and Sunday school. I provided her with guidance on writing interpretation labels for the artefacts - i.e., we don't like lots of words in museums. After detailed research in our library and via other sources, she narrowed all her research notes down into the labels. Writing museum labels is a true skill and one that came naturally to Caroline.

This summer, a friend and fellow student of Caroline's, Alex, joined the EB volunteer team. Alex was a star throughout our busy summer months, being on hand to welcome visitors, learning key aspects of collections care, and adding photographs of artefacts to the MODES catalogue.

Reading Room Equipment

I am pleased to report that we have been awarded funding by the Religious Archives Group Small Grants Scheme to purchase reading room equipment. The Englesea Brook library is a small but valuable resource that researchers access for a variety of purposes, ranging from genealogy to academia. Unfortunately, we don't have the space for

a reading room and researchers generally use the desk in the cottage parlour. I have therefore been able to purchase professional reading room equipment, including book cushions, snake weights, reading lamps, and magnifiers. This will allow us to transform the parlour into a temporary reading room with an air of professionalism when researchers visit.



Our reading room equipment

Frank Salisbury Portraits



The Salisbury Portraits

We received two portraits of a minister, Rev Samuel Woodall, and his wife, Helena, from Jubilee Methodist Church in Stockport. They required new frames due to woodworm damage, so were sent away for conservation work. A big thank you to Methodist Heritage for supplying a small Connexional grant to enable this work to be undertaken.

In the corner of these portraits is the signature 'Francis O. Salisbury'. A significant name it turns out.

Salisbury was a prolific and sought after portrait painter of the early 1900s. He painted royalty, including the coronation of King George VI and Queen Elizabeth, and a portrait of the Princess Elizabeth, the future Queen

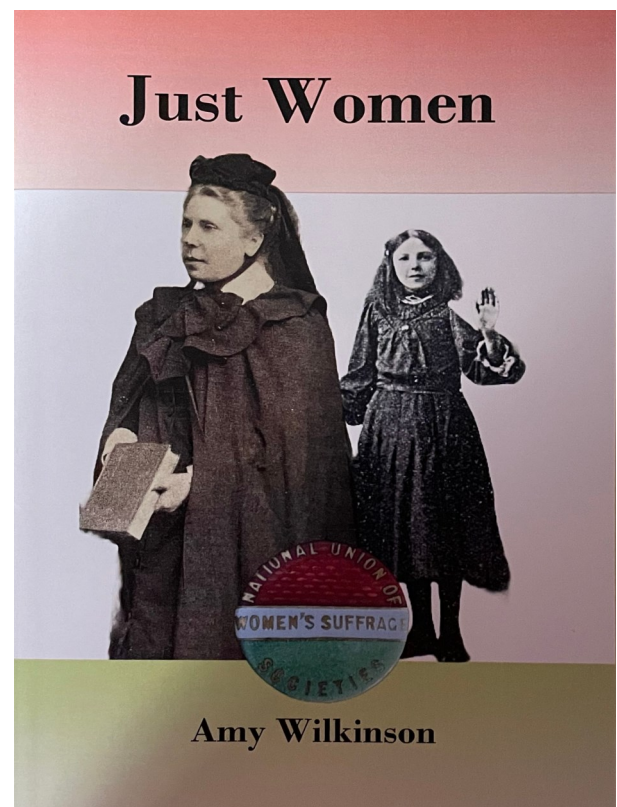
Elizabeth II. He even painted a miniature of Princess Mary Adelaide, Duchess of Teck, for the doll's house that belonged to her daughter, Queen Mary. He also painted the portraits of five US Presidents, including Franklin D. Roosevelt and Harry Truman. Salisbury was a committed Christian and Methodist. He painted several images of biblical figures, including Moses, Isaiah, and Elijah, and a portrait of John Wesley.

Unfortunately, we do not know why he painted the Woodalls. The only conjecture we can make is that perhaps they were friends.

Just Women Book

The year began with literary endeavours. Our audience survey participants indicated that they would like to learn about more women than we could viably fit onto the Just Women exhibition boards. Additionally, a visitor said it was a shame that there was a lack of books about women on sale in our shop. I therefore spent the tail-end of 2023 going back over my Just Women exhibition research and spent January and February writing these into a book. I also taught myself how

to do some graphic design to create the book cover, basing the colour scheme on the National Union of Women's Suffrage Societies. The first copies were sold at Crewe Women's Day on 9 March 2024, ahead of going on sale in the Englesea Brook shop when we reopened in April. Copies have also gone on sale in Epworth at the Old Rectory and Welsey Memorial Methodist Church. In total around 95 copies have been sold.



Just Women by Amy Wilkinson

Learning At Englesea Brook

Adelaide Partnership Plus

Our partnership with Adelaide School, Crewe, for children with social, emotional and mental health needs (SEMH) continues to strengthen. Over the last year we have delivered various workshops for key stages 2 to 5, including a focus on 2024, the year of elections, in which students utilized Ranters' Corner to present their own manifestos. In addition, we are providing the Christian element of the RE curriculum up to GCSE level which sees a group come to the museum each week until the end of the school year.

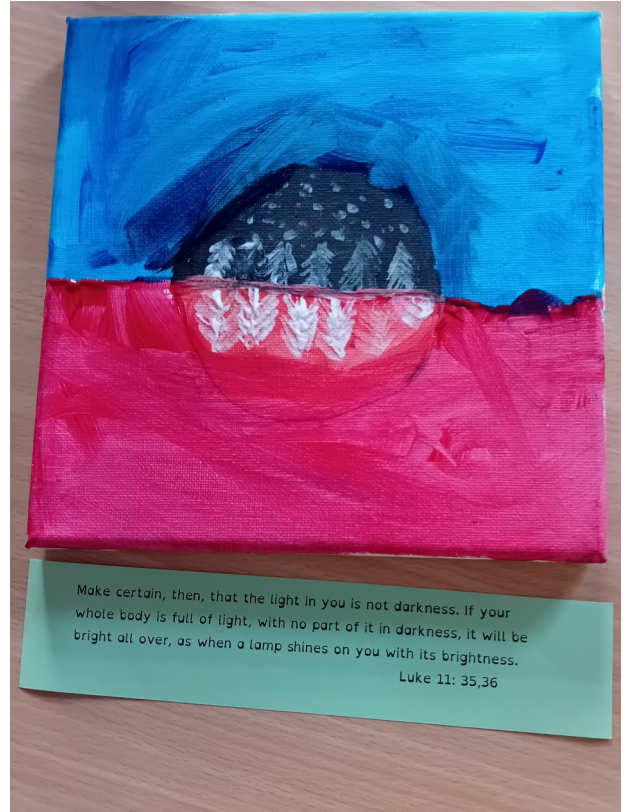
We have also been able to work further with The Lodge Reset from Sandbach School, an alternative provision for years 7 to 9. Due to the nature of the placements of pupils and their individual challenges, these sessions have been on an ad hoc basis and depend very much on the stability of the young people

on the day. However, we have seen some beautiful, profound work created, particularly in the banner-making session.

They will visit us again in December for another 'Star of Bethlehem' session. It is both ours and The Lodge's hope that there will be opportunities for more sessions in 2025.

The success of small group workshops is also evident in our regular home-educated cohort where we have welcomed between seven and fifteen children, aged 2 to 15 years, and their accompanying adults.

Purchase of materials and creation of resources for all the workshops have been made possible by the grant awarded by Museum Development Northwest's Sustainable Improvement Fund for both the Adelaide Partnership and for the development of online learning programmes which can now be found on the website.



Above and below: examples of the work of Adelaide pupils

Work from Sandbach School's The Lodge Reset



Resource! Refresh! Revive!

'How are museums reflecting a living church?' This was a question posed by the Connexion that has really set us thinking about our missional purpose as we tell the story of Primitive Methodism. Inspired by the question and research for Friday Forum Theatre that unearthed many amazing stories, we realized we are custodians of a rich pool of material that may be useful for local preachers to inform their preaching, prayer and practice. We held the first of which we hope are many resource days for this group in October 2024, where we put

our collection store and library at the disposal of local preachers, both experienced and in training, to delve into for inspiration. Entitled 'Resource! Refresh! Revive!' it was led by Helen Kirk, Rob Hilton and Elizabeth Morris, participants were guided as they reflected upon their role now in the context of past examples, and encouraged to develop storytelling to engage modern congregations. The day was punctuated with an excellent

soup lunch prepared by Ruth. Feedback was very positive, the only criticism being that it wasn't long enough! We hope to develop more resource days for local preachers and others in the church and are grateful for a grant from the Fisher Fund to provide bursaries to ensure there are no financial restraints for participants.

Two hundred years of Childhood!

2024 marked an important anniversary – the two centuries since the first publication on the Atlas Press at Bemersley of the Primitive Methodist Children's Magazine. The PM Connexion agreed a magazine filled with Bible stories, poems, fascinating facts about the world around us, science and grammar, would be of great benefit to Sunday school scholars after receiving a suggestion for such from Nathaniel West in November 1823. He believed it would be 'a benefit to their young minds' and 'would probably be the means of vastly increasing...our growing connexion', and the rest is history, as they say! Childhood therefore seemed a natural theme to take for the year given our efforts to make the museum a more playful place and to encourage more families to visit. The hanging boards above the Atlas Press were filled with examples from early editions of the magazine; Victorian dolls and toys were borrowed from Epworth Old Rectory and

Brampton Museum; Sunday school and baptism artefacts were curated; and new interpretation was created to explore childhood health, work, mortality, and stories of Prim childhoods that inspired activism in adulthood. Activity bags on these sub-themes, filled with sounds, challenges, games and objects were compiled to accompany younger visitors around the museum as they followed childhood trails and settled down in Ebee's Space to enjoy Lego, dressing-up, colouring and a good book!

The theme certainly captured many an imagination as older people reflected on their own childhoods and the many more younger visitors it attracted marvelled at life for children all those years ago.

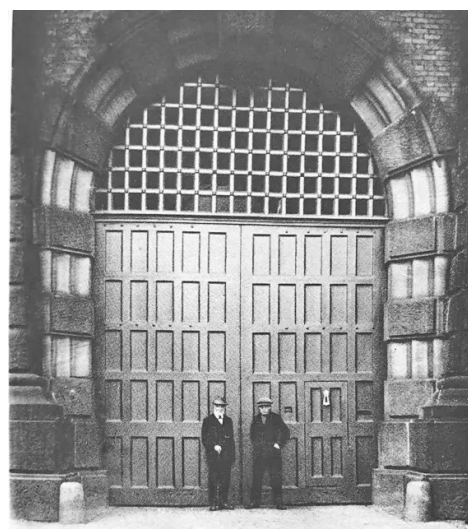


Ebee reading

Picking Up A Lost Thread

This is the title of our latest project that began at the beginning of October and will be completed by the end of March 2025. It is taken from the profound image printed in the Primitive Methodist Missionary Society final reports of 1928-32 of Prison Gate mission in action, whereby Prim volunteers would meet released offenders and walk with them on the road to recovery and re-introduction into society. Many of the offenders had been imprisoned as a result of alcohol misuse and its consequences for finances, health and relationships. After our successful partnership with the Probation Service that produced the Root and Branch touring exhibition, the Association of

Independent Museums (AIM) granted us further funding to develop the stories uncovered from the research. We will use the funding to create three short films for 16-19 year olds which explore the effects of drink and drugs, using archive Temperance and other material. To help us explore historical accounts and their relevance for young people today, we will be partnering with Adelaide Link (Sixth Form).



PICKING UP A
LOST THREAD

The Ministry of
the Prison Gate.

Friday Forum Theatre

This bi-monthly event held during our open season has focused this year on Primitive Methodist characters. The first in May presented the truly inspirational story of Mary Porteus, a travelling and local preacher from the northeast whose life reflected the providential goodness of God during the 19th century. In June, William Clowes' early life up to his conversion at an 1805 lovefeast, presented an opportunity for a more abstract retelling, using a ball of clay to create different props and symbolism. The final performance of the season in September propelled the Prim story into the early 20th century as two women missionaries to Africa, Amy Richardson and Elizabeth Stead, told their

The Peace Garden

Work on the Peace Garden, to be situated at the back of the store, has been painfully slow – but they say that good things come to those who wait! After being let down by our landscaper we were recommended a company by a neighbour and Ben Lunt from Weston Landscapes came to our rescue! Ben immediately caught the vision, indeed, was inspired by it and quickly got to work to eke out our small budget and has managed to secure several pledges for free plants, stone, skip and labour, to name just a little. Sadly, personal bereavement meant Ben was unable to begin the work when intended, but will hopefully have the garden landscaped by the end of 2024.

In the meantime, junk model artist Sue Guildford-Potts has worked with Year 6 pupils at Weston Village Primary School to create a beautiful mural that has been installed on the side of the store on the path up to the garden. It is a tree that is hung with plaques made by the children of their interpretation of peace which include pizza, music, ice cream, along with more traditional symbols. A long time germinating, but

moving tales of pioneering ministry in teaching and nursing.

Each performance was followed by discussion and refreshments that gave the opportunity to explore further the remarkable stories, the characters and their inspiration and encouragement to us today – the watchwords being 'tenacity' and 'faith!' 'A Christmas Carol' will once again be performed by Elizabeth in the bedecked chapel for the general public and for Adelaide School, and this will be part of a weekend plus of Christmas activities to brighten the short winter days. Friday Forum Theatre will be back in 2025 – keep an eye open for publicity as to whose stories will be presented!

we can now see the children's and our ideas blossoming and the hope is that by spring we will have an accessible place of peace to enjoy by the community and visitors in these tumultuous times.



Tales From The Potbank: one of Friday Forum Theatre's shows from 2024



Elizabeth Morris in the annual performance of Charles Dickens' "A Christmas Carol".



The Englesea Brook Peace Garden

Messy Church

In August we held our second annual Messy Church. Our theme was the Olympics and we focused on being on Jesus's Team through the story of Matthew, the tax collector's calling. There were cakes to decorate, Olympic hats and laurel wreaths to make, clay medals to sculpt, an Olympic torch to fashion, and an obstacle course to complete (which

proved very popular!). Although widely publicized to the churches and the community, sadly the number attending was low. We are going to get our Olympic thinking hats on to see if a new approach might work better – we are determined to run the race and win! (Groan).



Hand-coloured slide of a camp meeting at Mow Cop

Mow Cop Heritage Day

In May, Rev Yan Yan Case of Mow Cop Methodist Church held a heritage day to highlight the significance of the area to revival and mission as a result of the first camp meeting held at the castle at Mow Cop in 1807. We lent our Bourne 250 exhibition, costumes and Elizabeth performed 'Sarah Smith, a sinner saved' – the story of the woman who brought Primitive Methodism to Englesea Brook. The day also included other talks, a choir, and children's crafts... and lots of cake (naturally)! The day's success has inspired Mow Cop Methodist Church and Englesea Brook

to team up again for another heritage event in May 2025. On this occasion, Englesea Brook will host talks and activities at the museum on Saturday, 31st, followed by a Sunday service at the castle led by Mow Cop.

Crafty Ranters

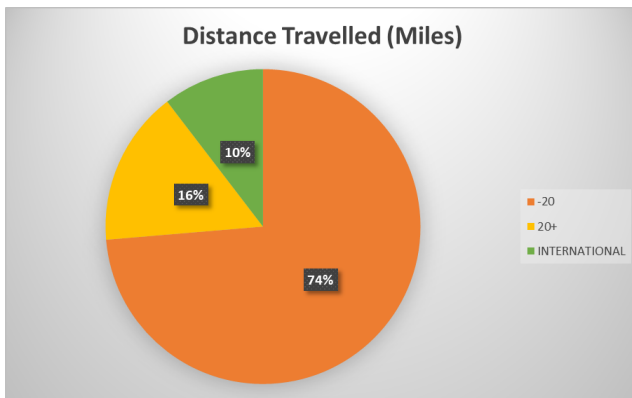
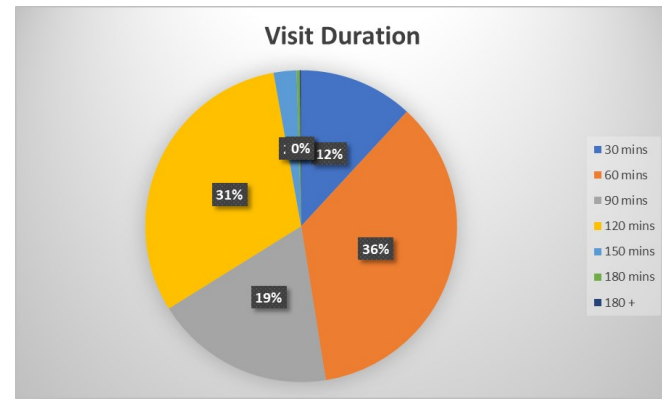
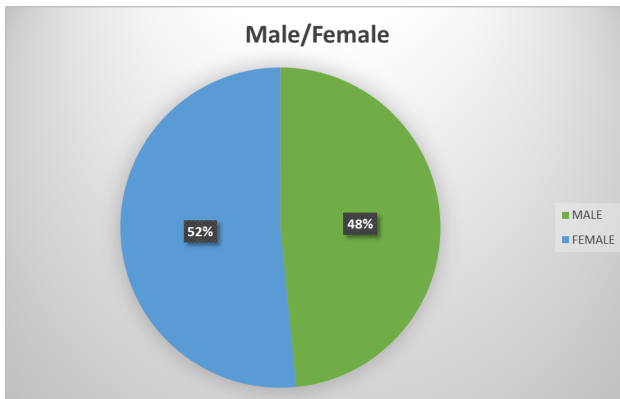
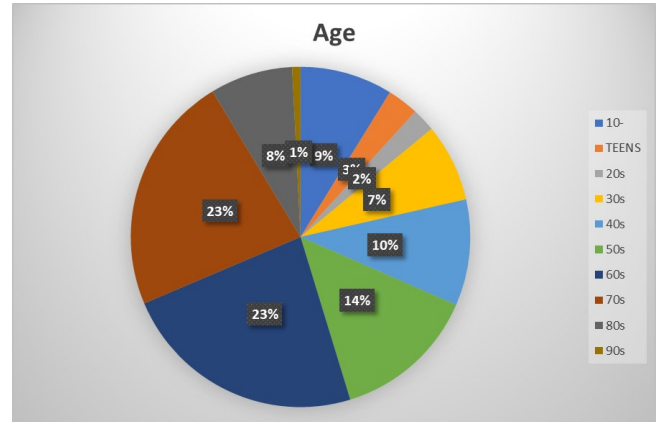
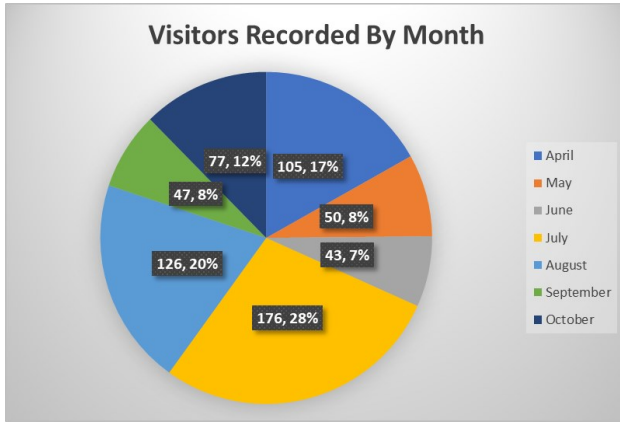
If my memory serves me correctly, this is the 3rd year of Crafty Ranters. As usual we have done plenty of crafting...and ranting! Hopefully though our frustrations and concerns led to positive actions. The theme for this year was 'Empowered Women' and each month we looked at a particular social aspect of women's lives. January saw us using screen printing to look at how we can value ourselves, and in July we made masks to express how women are prone to masking aspects of themselves in order to fit in; stories were shared of how true that is for women who are neuro-diverse. We also focused our attention on the needs of women across the world. In June we thought about girls' education and learnt how having your period is so disruptive to learning. Many girls across the world have no access to clean water, toilets and privacy in school, so each month they stay

at home. So in our sessions that month we whipped out our sewing machines and made sanitary pads to be sent to one of the many charities that distribute them to girls at school. Other sessions included working with clay, making 'take note' note books, and our final session looked at women in power; have women found their own authoritative voice, or do we follow male models of leadership? In response to the question we made huge flouncy paper flowers and had much discussion! Where next for Crafty Ranters? Numbers attending have been rather low, so perhaps it's time for a review of what we do. It's certainly a time valued by those who attend, but perhaps we need to find another model of how we gather to craft and rant. Watch this space.
Frances Biseker



In July we made masks to express how women are prone to masking aspects of themselves

2024: Visitors At A Glance



Look out for forthcoming events at Englesea Brook on our website, our Facebook page and on our Instagram and Bluesky feeds. Please see the front page for links.

Contact Us:

Ruth Hilton, Director: director@engleseabrook.org.uk

Elizabeth Morris, Learning Officer: learning@engleseabrook.org.uk

Amy Wilkinson, Heritage Officer: heritage@engleseabrook.org.uk

Stephen Brown, Administrator: admin@engleseabrook.org.uk